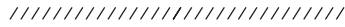
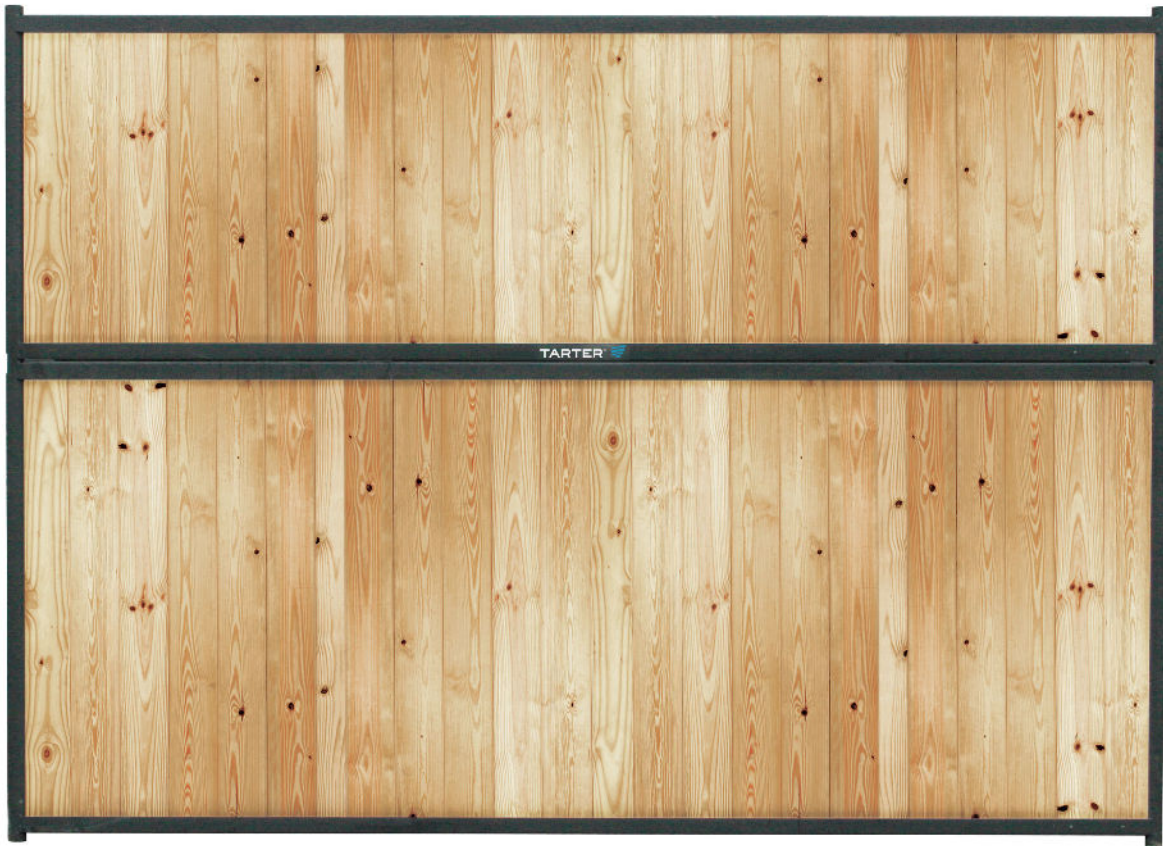


10' SENTINEL STALL SIDE SOLID LUMBER KIT



LKSS10



FOR MORE INFORMATION, QUESTIONS, OR CONCERNS,
PLEASE CONTACT TARTER CUSTOMER SERVICE:
1.800.RED.GATE (1.800.733.4283)

KIT INCLUDES:

BOTTOM PORTION

- (15) 46-3/4" X 6-3/4" TONGUE AND GROOVE
- (1) 46-3/4" X 6-3/4" GROOVE ONLY
- (1) 46-3/4" X 5-3/4" GROOVE ONLY

TOP PORTION

- (15) 33-3/4" X 6-3/4" TONGUE AND GROOVE
- (1) 33-3/4" X 6-3/4" GROOVE ONLY
- (1) 33-3/4" X 5-3/4" GROOVE ONLY

TOOLS NEEDED:

- PHILLIPS SCREW DRIVER
- DRILL
- RUBBER Mallet
- TAPE MEASURE
- CIRCULAR SAW

INSTALLATION NOTES:

- It is recommended to have the stall panel in its final location before installing the lumber kit.
- Install Bottom Portion first.
- The beveled edge of the boards must be facing outward and the flat edge of the boards facing inward.
- A rubber mallet may be used to secure the boards tightly without damaging them.



GROOVE



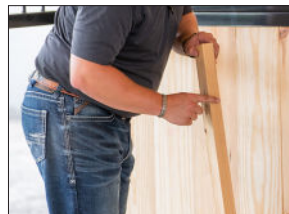
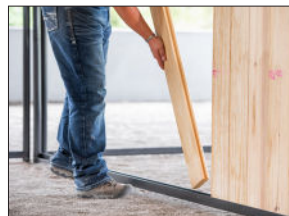
TONGUE



BEVELED EDGE

BOTTOM PORTION INSTRUCTIONS:

1. Install 15 - 46-3/4" x 6-3/4" tongue and groove boards, with groove towards the frame. The first few boards can be installed by leaning at an angle and sliding in the channel.
2. Install 1 - 46-3/4" x 6-3/4" board, with groove only. Use notch to install final boards.
3. Install 1 - 46-3/4" x 5-3/4" board, with groove only. Make sure the non-grooved side is towards the frame. Last board may need to be cut to fit properly. Cut must be made to the flat edge.
4. Secure lumber with 4 - #10 x 1" Phillips screws, using the pre-drilled holes in the channel. It is important to screw the lumber in so the boards do not come out (Included in stall hardware).



TOP PORTION INSTRUCTIONS:

1. Install 15 - 33-3/4" x 6-3/4" tongue and groove boards, with groove towards the frame. The first few boards can be installed by leaning at an angle and sliding in the channel.
2. Install 1 - 33-3/4" x 6-3/4" board, with groove only. Use notch to install final boards.
3. Install 1 - 33-3/4" x 5-3/4" board, with groove only. Make sure the non-grooved side is towards the frame. Last board may need to be cut to fit properly. Cut must be made to the flat edge.
4. Secure lumber with 4 - #10 x 1" Phillips screws, using the pre-drilled holes in the channel. It is important to screw the lumber in so the boards do not come out (Included in stall hardware).

